

By Mary E. O'Leary
Register Topics Editor

NEW HAVEN — Erwin Hauer, designer of architectural screens favored by the likes of famed architects Philip Johnson and Marcel Breuer and recently enjoying a renaissance of his own works, is moving his business to a city neighborhood that is undergoing a renewal itself.

Hauer, 83, and Enrique Rosado, 42, a former student, are consolidating the design and production components of their company at the former Flint Ladder Company property bound by Chapel, Lloyd and River streets.

A professor at the Yale School of Architecture for more than three decades, Hauer's geometrically complex screens, mainly cast in durable masonry materials, but now also in wood fibers produced through digitally controlled milling machines, thanks to Rosado, can be found in New York, Miami, Montreal, Mexico City and Caracas, Venezuela.

The screens serve as room dividers or walls, mostly in corporate or commercial settings.

Rosado credits Deputy Economic Development Director Tony Bialecki and development specialist Helen Rosenberg, with getting them to locate in New Haven with its large supportive artistic community.

"We could have gone anywhere," said Rosado, who was at one point considering moving to a large farm. He bought two contiguous Flint properties in October for just over \$500,000.

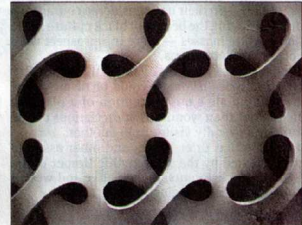
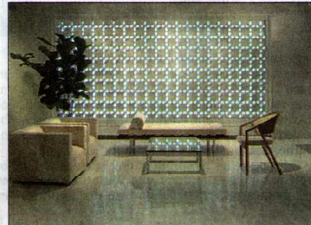
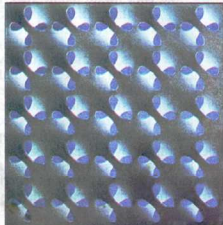
"I think they are doing a very good job of developing that area," Rosado said.

Rosado, who has an extensive background in computers, got to know Hauer at Yale, a student-teacher relationship that later turned into a business partnership when he convinced Hauer to again produce his light-defusing designs commercially after a 40-year-plus hiatus.

Some hand-casting of the complex abstract creations, originally designed in the 1950s by Hauer, was being done at Erector Square in another part of Fair Haven, said Rosado, in 15 pound batches. "Like baking a cake," he said.

The rest of the production was outsourced to skilled technicians in New Jersey, while Hauer's studio was in

See Screen, B5



Examples of architectural screens designed by Erwin Hauer.

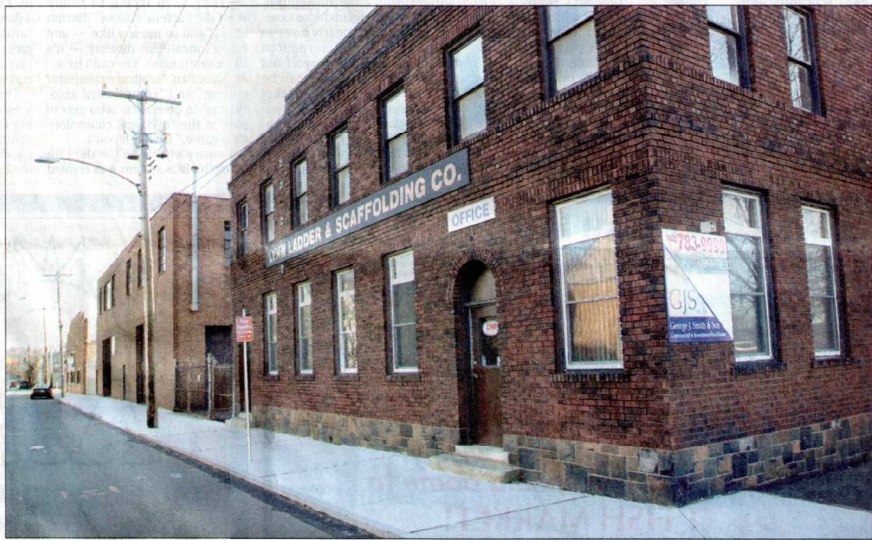
Contributed photos

Professor, 83, reinvents architectural screen business

DESIGNER REBORN



Erwin Hauer, right, and business partner Enrique Rosado are opening a studio and manufacturing space on Chapel Street in the Fair Haven section of New Haven, shown at right.



Arnold Gold/Register

Screen: Industrial building gets fresh start as design center

Continued from B1

Bethany.

EHR Associates will be the principal manufacturer of the three-dimensional architectural screens and walls that will be sold and promoted by Erwin Hauer Studios and there will be a showroom of sorts with some of Hauer's work.

It's a low-key, almost reclusive business, with high-end clients

attracted by Hauer's reputation.

The property, which has been a worksite for the ladder business going back to the early 20th century, was most recently home to the Lynn Ladder Company, who bought the business from its rival, the Flint Ladder Company, although the Flint family continued to own the property.

Up to about five years ago, several dozen people still worked

there, said Rosado, who has kept on two of the longtime employees. His workforce of technicians for the custom-produced work will continue to be small.

Hauer, who was born in Austria, came to the United States on a Fulbright Scholarship in 1955 and a year later was invited by artist Josef Albers to study at Yale.

His professional rebirth is connected to the publication in

2004 of "Edward Hauer Continua: Architectural Screens and Walls," by Princeton Architectural Press, which documents his work as a sculptor and designer.

"It is rare for us to think of walls as works of beauty, however, those by Erwin Hauer make us look again. 'Erwin Hauer: Continua' resurrects the extraordinary but little known work of this Austrian-born sculptor, whose

designs of perforated and modular structures are symphonies of measured elegance," according to a review in "Published Art 4," an Australian publication.

A new piece with Rosado was installed at the Knoll showroom in Chicago and shown at the International Contemporary Furniture Fair in 2006.

Other works can be found in New York at Centria Condos, Eli

Tahari headquarters and the Standard Hotel, while the partners are working on a sliding wall for the Museum of Fine Arts in Boston.

Hauer was inducted into the Interior Design Hall of Fame last December for his lifetime contributions.

Mary E. O'Leary can be reached at 203-789-5731 or moleary@nhregister.com